



imagine. illuminate. inspire.



Lumenplay® App Walk-Through

Lumenplay® Support



Operating your Lumenplay®

Learn from first-hand experience, on both iOS and Android.

Lumenplay® App | Initial Setup

When first opening the App, connect to controllers and immediately name and set the proper number of bulbs.

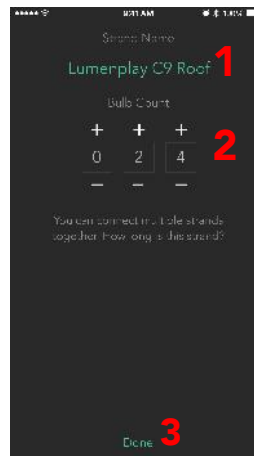
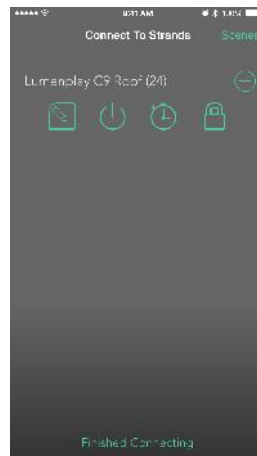
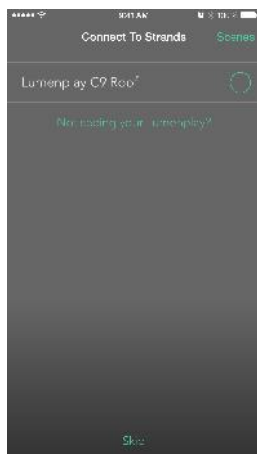
Lumenplay® App

Connect to Controller "+" and Change Settings: 

- 1: Change Controller Name
- 2: Set Controller to Correct Bulb Count
- 3: Finish and Save

Tips & Suggestions

- Connect to up to 8 Controllers for simultaneous control, setting all Controllers to same Scene.
- Connect to controllers individually to set a unique Scene for each Controller. When complete, disconnect from that controller and connect to new.



Controller Settings



Name & Bulb Count

Naming helps identify each controller in an installation, but is not necessary. Bulb Count is critical to ensure proper operation of Lumenplay Products.



On/Off Power Switch

Manually turn power on and off; Lights & Controller will stay in this state until changed otherwise.



On/Off Timer

Quickly and easily set a time for your lights to turn on and what time to turn off. This will happen the same each day.



Pincode Locking

Set a custom pin to lock your lights. Pin must be entered upon each connection. Recoverable by unplugging and plugging in controller within 30 seconds.

IMPORTANT

ANDROID USERS

Do not pair with Lumenplay in your Bluetooth Settings.

We made it easier than that for you!

If a user has an Android: Always first ask: DID YOU PAIR? If so, UNPAIR!

MAKE SURE YOUR Bluetooth is ON Connect in App

Lumenplay® Support

Operating your Lumenplay®



Lumenplay® App | Scenes Page

This is the master page of the app, and all controls start here. A Scene is a combination of: Color Sequence, Function, Speed & Direction, and Brightness. This page allows you to edit the Scene, or use it for Music, or even Randomize that Scene.

Return to Controller Settings
Returns to previous page.

Edit Scene
Takes user to main control pages, to modify the current scene.

Current Scene
Represents currently selected scene, which should be occurring on lights. Slide left or right to change to the next scene.

Scene Name
Click on the name to edit/change.

Lock/Unlock Scene
A locked scene can not be edited. A duplicate can be created instead.

Music Visualizer
Choose a song to initiate the music visualizer. Lights will bump to the music, changing through the colors of current scene.

Randomizer
Press the PLAY button and Randomizer will initiate. It takes a your color sequence, selects a random function and plays it for a random amount of time. Then, does it again!

Add Scene
Add a new, blank scene.

Delete Scene
Deleted scenes are gone forever.

The screenshot shows the app interface with a central display of colored circles representing a scene. The top bar includes a back arrow labeled 'Strands', the text 'Current Scene', and an 'Edit' button. Below the scene display is the scene name 'Run, Run Reindeer!' with a lock icon. At the bottom, there are buttons for 'Pick a song' (with a music note icon), 'Randomize' (with a function icon), an 'Add Scene' (+) button, and a 'Delete Scene' (-) button. A status bar at the very top shows the time as 9:41 AM and 100% battery.

Lumenplay® Support

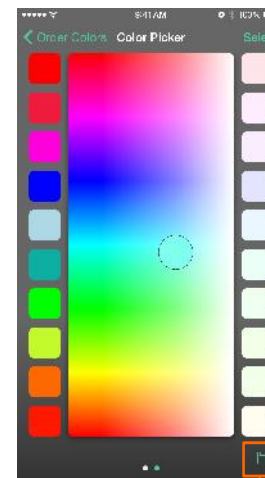
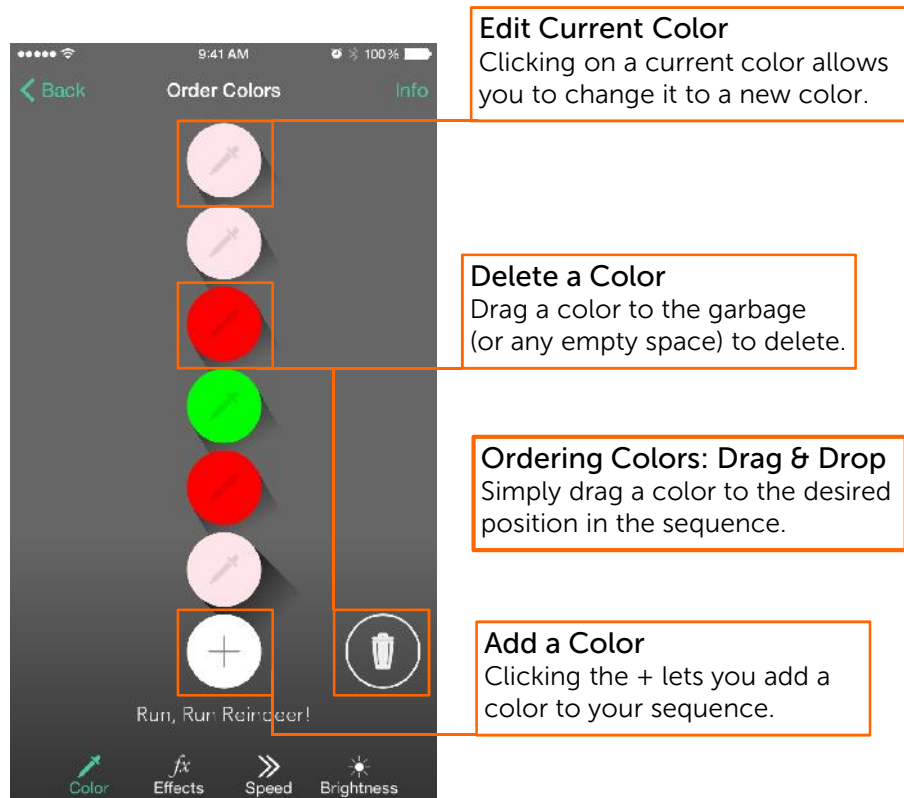


Operating your Lumenplay®

Learn from first-hand experience, on both iOS and Android.

Lumenplay® App | Color Sequence & Selector

Choose your color! Any Color! With Lumenplay®'s RGB technology, a user can create a Color Sequence of up to 8 colors, *choosing from millions of colors.*

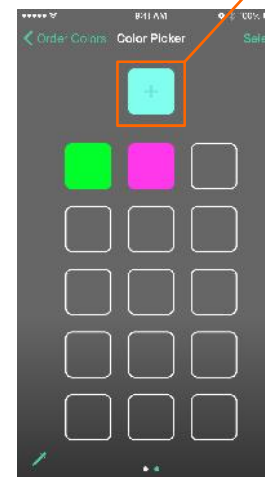


Choosing Custom Colors

Place your finger on the color picker, and simply drag it around. The lights will react and match the color under your finger.

OR, choose from the preset colors on the left or right.

When finished, press SELECT to add the chosen color to your Sequence.



Saving Custom Colors

Found the perfect color?! Great!

Before you press SELECT, click on the SAVE DISK on the bottom right corner. It will bring up another screen, which allows you to add that color to your custom color palette for later use! Simply press the + in the middle of your just-chosen-color at the top, and it will be automatically added to the palette.

Lumenplay® Support

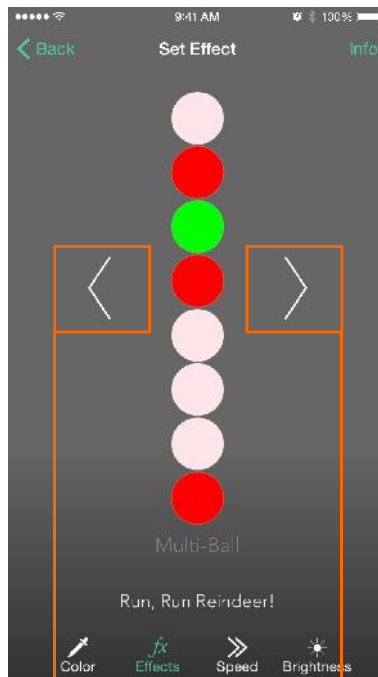


Operating your Lumenplay®

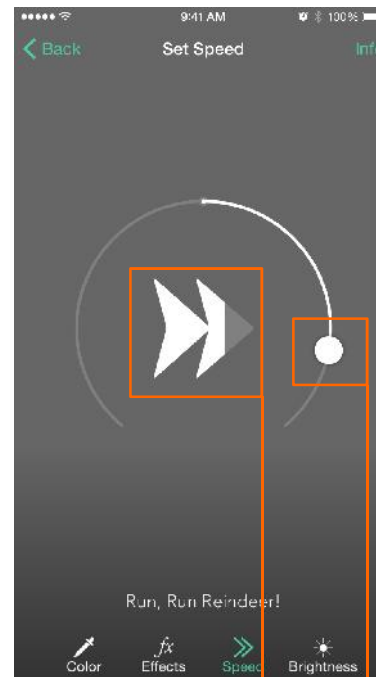
Learn from first-hand experience, on both iOS and Android.

Lumenplay® App | Functions, Speed & Direction, Brightness

Using your now-chosen Color Sequence, the screens below allow you to modify your scene to *exactly* what you want!

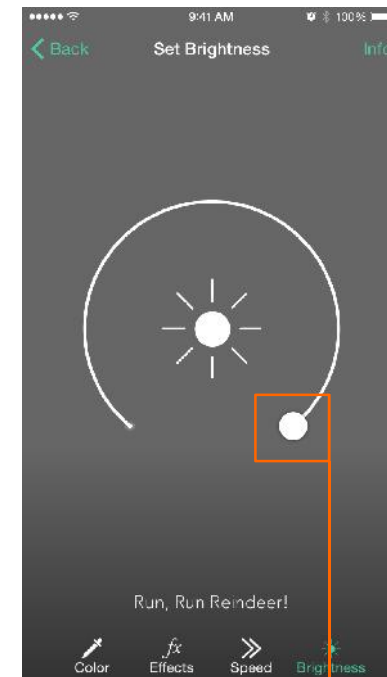


Select Function
Press the arrows to cycle through available functions.



Set Direction
Dragging the ball to the opposite side will change direction.

Adjust Speed
Modify the speed function by sliding the ball.



Adjust Brightness
Simply drag around circle. New brightness will filter through light strings. Not immediately.

Lumenplay® Support



Other Resources:

www.youtube.com/s4lights

Several Lumenplay Troubleshooting Videos

www.Lumenplay.com

Contains documents, videos, links and other materials to further assist you

General Assistance:

info@lumenplay.com

info@s4lights.com

1.888.660.6640

Immediate Assistance:

jared@s4lights.com

info@s4lights.com

330.575.4012